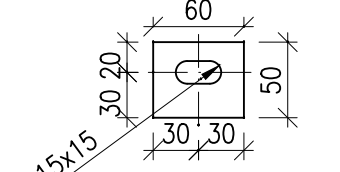
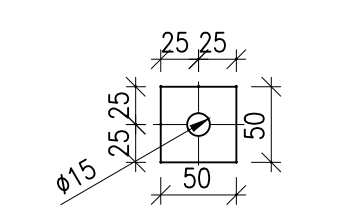


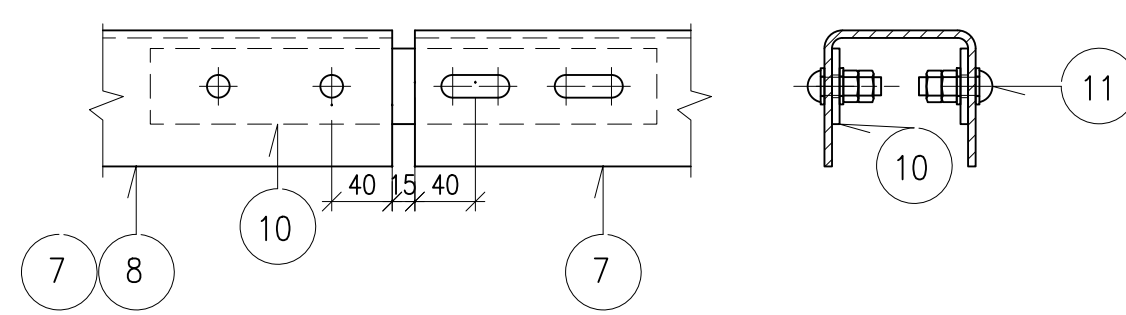
Detaja 3, M 1:5



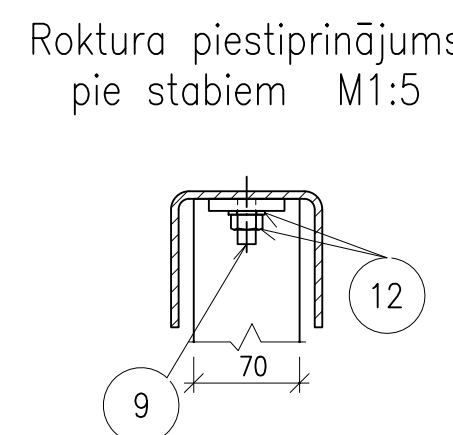
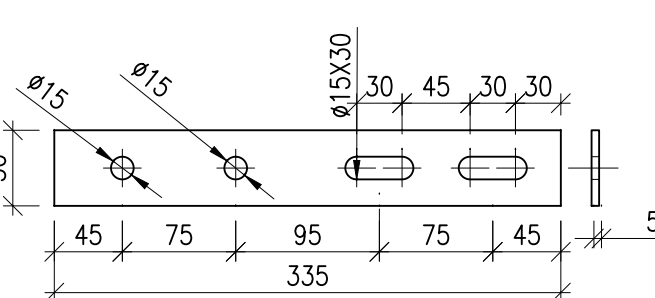
Detaja 4, M1:5









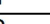

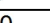


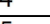





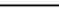
Roktura savienojums M1:5



Detaja 10, M1:5

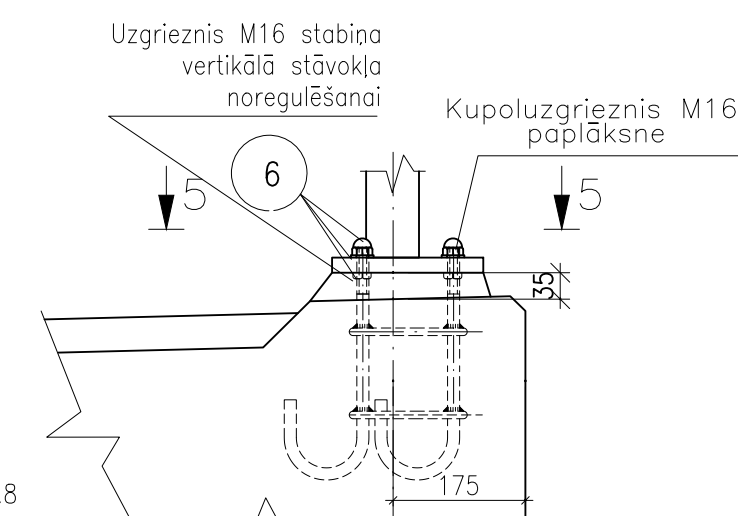


Margu elementu specifikācija un kopsavilkums

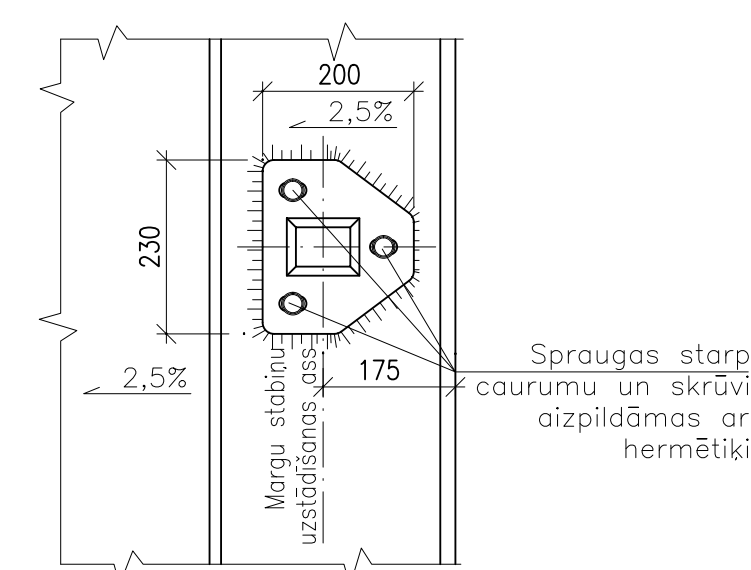
Elementa nosaukums	Elem. skaits gab	Poz. Nr.	Šķērs griezum mm	Garums mm	Skaits		Kopējais garums m	1m vai 1 stipr. masa, kg	Kopējā masa kg	1 elem. svars kg
					1elem. gab	kopā gab				
Margu vidus stabs	22	1	 70x50x5	1055	1	22	23,21	7,96	184,8	16,2
		2	 20x200	230	1	22	5,06	31,4	158,9	
		3	 8x50	50	2	44	2,64	3,14	8,3	
		4	 8x50	50	1	22	1,10	3,14	3,5	
Margu gala stabs GS-1, GS-1A	2	1	 70x50x5	1055	1	2	2,11	7,96	16,8	16,2
		2	 20x200	230	1	2	0,46	31,4	14,4	
		3	 8x50	60	2	4	0,24	3,14	0,8	
		4	 8x50	50	1	2	0,10	3,14	0,3	
Staba stiprinājums pie ielekamās detaļas	24	6	KU+U+P, M16	-	3	72	-	0,074	5,3	5,3
Vidus roktura posmi	3	7	U 100x90x5	12000	1	3	36,00	10,26	369,4	123,3
		9	Skurve bez galvas M12	35	6	18	0,63	0,89	0,6	
Gala roktura posmi	2	8	U 100x90x5	4875	1	2	9,75	10,26	100,0	50,1
		9	Skurve bez galvas M12	35	3	6	0,21	0,89	0,2	
Roktura posmu savienojums	8	10	 5x50	335	1	8	2,68	1,96	5,3	
		11	SA+2U+P, M12	35	4	32	1,12	0,147	4,7	10,0
Staba stiprinājums pie roktura	24	12	U+P, M12	-	-	24	-	0,0217	0,5	0,5
Margu režģa gala panelis GP-1, GP-1A	2	13	 60,3x4	10130	1	2	20,26	5,55	112,4	63,61
		14	 φ 20	490	31	62	30,38	2,47	75,0	
		15	 8x40	60	6	12	0,72	2,51	1,8	
		9	Skurve bez galvas M12	35	6	12	0,42	0,89	0,4	
Margu režģa vidus panelis	6	16	 48,3x2,6	200	2	2	0,4	2,93	1,2	49,7
		17	 60,3x4	5996	2	12	71,95	5,55	399,3	
		14	 φ 20	490	39	234	114,66	2,47	283,2	
		15	 8x40	60	6	36	2,16	2,51	5,4	
		9	Skurve bez galvas M12	35	6	36	1,26	0,89	1,1	
		16	 48,3x2,6	200	2	12	2,4	2,93	7,0	
Margu režģa stiprin. pie staba	48	18	KU+P, M12	-	-	48	-	0,026	1,2	1,2
Kopā ar metinājumiem (1,5%)									1762	
T. sk.									1788	
									 70x50x5	202
									U100x90x5	469
									O 60,3x4	512
									O 48,3x2,6	8
									φ 20	358
									Slokšņu tērauds	199
									Stiprinājumi	14

S - skurve, SA - skurve ar apalu oalu, U - uzriņezis, KU - kupolzriņezis, P - pablāksne

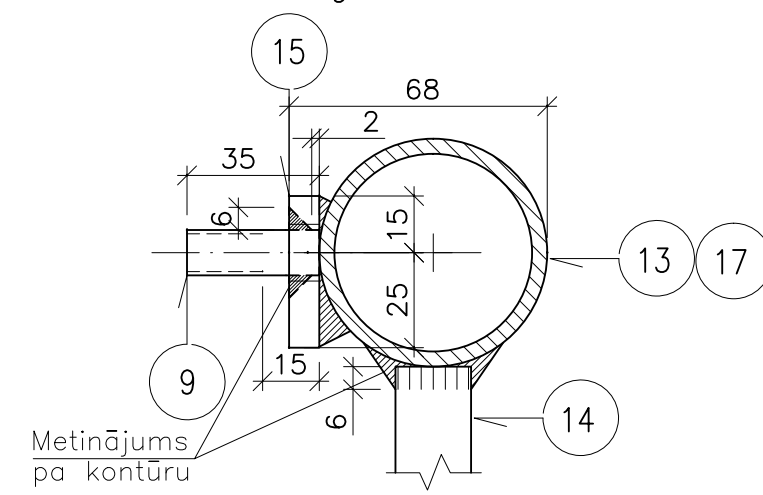
Staba stiprinājums pie ieliekamās detaļas
M1:10



5-5 M1:1C



Mezglis C, M1:2



etinājums
a kontūru

<